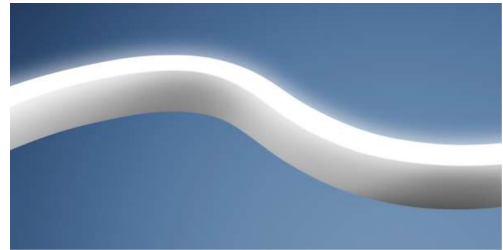


FLEXLUC SIDEVIEW 16

- flexible LED-Lichtlinie aus hochwertigem Silikon mit Schutzart IP 67
- nur ein Bin je Lichtfarbe nach 2-Step-MacAdam
- geringer Biegeradius von 15 cm (nur eine Achse)
- klare Linien und Lichtaustrittsfläche ermöglichen bündiges Einbauen in Decken, Wänden und Möbel
- gleichmäßige, homogene Ausleuchtung über die gesamte Lichtaustrittsfläche in Kurvenform (d.h. bei Lichtaustritt nach oben kann das Band nach links und rechts gebogen werden).
- Einspeisung auch von unten oder seitlich möglich, wodurch ein nahtloses Aneinanderreihen möglich ist.
- erhältlich in Längen von 50 mm bis 20.000 mm, in 50 mm Schritten



This product is suitable for installation on the floor, wall, or ceiling, both indoors and outdoors. The FLEXLUC must be mounted on a clean, stable, level, and non-tilting surface. Please follow the installation and safety instructions at <https://www.barthelme.de/content/de/manuals.aspx> !

PHOTOMETRIC DATA



	700000002	700000002_2
Typ. color temperature	2700 K	3000 K
Light color	warm white	white
Typ. total luminous flux per metre	512 lm/m	537 lm/m
Efficiency	53 lm/W	55 lm/W
EEC of installed light source(s)	G	
Typ. color rendering index	90	
Beam angle	110 °	
Dimming	yes	
L80 bei Ta < 55°C	54000 h	

PHOTOMETRIC DATA TOLERANCES IN THE FLEXLUC FAMILY: The stated photometric data of the FLEXLUC products are typical values which in practice are influenced by the binning of the LEDs as well as the individual production steps in the encapsulation process. Factors such as layer thickness, type of encapsulation and the light color of the uncoated LEDs have an influence on the resulting color temperature of the finished FLEXLUC product. As each of these factors are subject to process and production related tolerances the resulting photometric data of the FLEXLUC products can deviate from the stated typical values.

ELECTRICAL DATA

	700000002
Operating voltage	24 V DC
Power per meter	9,6 W/m

MECHANICAL DATA

	700000002
Width	16 mm
Height	17 mm
Bending radius	150 mm
Type of protection	IP 67
Impact resistance IK	IK10*

*applies only when used with the aluminum mounting profile

Aqualuc products have a length tolerance +/- 5 mm at < 1 m and +/- 0.2 % at > 1 m

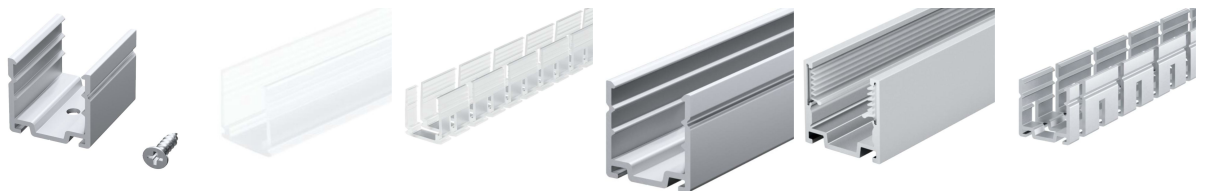
GENERAL DATA

	70000002
Ambient temperature Ta	- 40°C ~ +45 ° C
Max. temperature Tc	69 ° C
Max. operable length	20000 mm
Max. buildable length with 1 m cable	20000 mm
Connector cable	individuell

ACCESSORIES

	70000009	70000010	70000011
Description	bracket set, aluminum, with 4 brackets + screws	mounting profile, PC plastic, 1 m	flexible mounting profile, bending diameter 300 mm, PC plastic, 1 m
Material	aluminium	polycarbonate	
Length	25 mm	1000 mm	
Width	20,2 mm	19,5 mm	
Height	20,8 mm	22,6 mm	
Remarks	recommended distance: 25 cm		

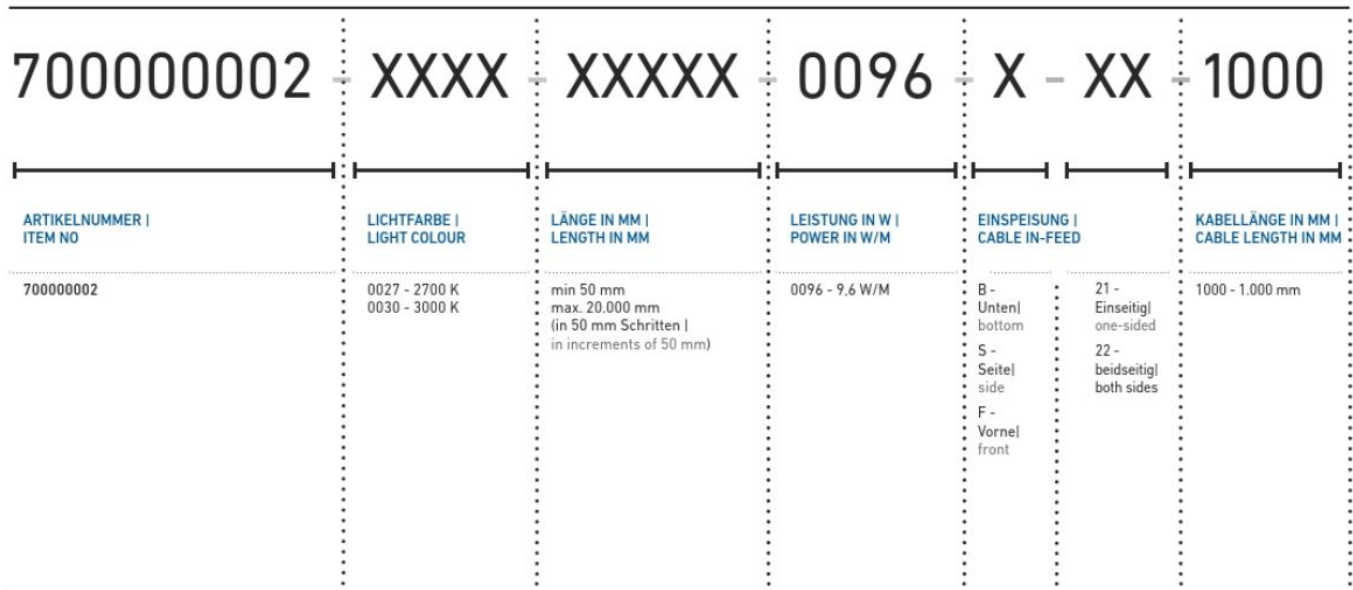
	70000012	70000013	70000014
Description	FLEXLUC 16 mounting profile, aluminum, 1 m	FLEXLUC 16 mounting profile, aluminum with floating silicone insert, 1 m	FLEXLUC 16 flexible mounting profile, aluminum, 1 m
Material	aluminium	aluminium;Silikon	aluminium
Length	1000 mm		
Width	20,2 mm	20,5 mm	20,2 mm
Height	20,8 mm	21 mm	20,8 mm



IN-FEED VARIANTS



ARTICLE NUMBER SCHEME



Längenausdehnung bei Temperaturänderungen beachten. | Please consider linear extension with temperature variations.

TEST SERIES CONDUCTED

High- and Low-Temperature Testing: By simulating product operation in high- and low-temperature environments, performance, reliability, and functionality under extreme temperatures are verified.

Water Resistance Test: Verification of the product's water resistance to determine whether it can prevent water ingress during various water exposures without impairing function or causing damage.

Temperature Rise Test: Testing the temperature rise of the product during normal operation or under specific loads to evaluate heat dissipation and thermal stability, ensuring that no malfunctions or performance degradation occur due to overheating.

Salt spray test: The product is exposed to salt spray to test its corrosion resistance and evaluate its durability and reliability in salty environments (e.g., coastal areas or chemically corrosive industrial zones).

Torsion test: Verification of structural integrity (connection stability, integrity of housing and encapsulation), optical performance (uniformity of light emission, brightness stability), and electrical performance (circuit conductivity, electrical insulation).

Voltage Drop Test: Measurement of the voltage drop across the circuit/component to determine whether the power loss during current flow meets the requirements.

Reverse Polarity Test: Verification of structural integrity (connections and housing/encapsulation), optical performance (light emission and brightness), and electrical performance (circuit and insulation).

Thermal shock test: Simulation of rapid, short-term temperature changes; testing of performance, reliability, and material and structural stability under thermal shocks; determination of adaptability to rapid temperature changes.

IK test: Applicable standard: IEC 60068-2-75:2014; testing of three points per meter and application of three hammer blows at each point to ensure that the LED strip functions properly.

UV Test: Testing of UV resistance and evaluation of changes in appearance, performance, and material durability under long-term sunlight exposure/UV exposure.

UL: Evaluation of product safety to ensure that products meet relevant U.S. safety standards and guarantee the protection of users and the environment.

TÜV: Tests products for safety, quality, and environmental compatibility to verify that the products meet the requirements of relevant German and European standards.

RoHS / REACH: Gewährleistung der Einhaltung von Beschränkungen für gefährliche Stoffe in Elektrogeräten (RoHS) und Schutz der menschlichen Gesundheit sowie der Umwelt durch ein umfassendes Chemikalienmanagement (REACH).

CE: Feststellung, dass Produkte den Anforderungen der einschlägigen EU-Richtlinien entsprechen, damit sie auf dem EU-Markt frei gehandelt werden können und sicherstellen, dass Produkte den Standards in Bezug auf Gesundheit, Sicherheit und Umweltschutz genügen.

CB: Erlangung von Zertifizierungen und Zulassungen aus mehreren Ländern durch einmalige Prüfungen, Förderung der gegenseitigen Anerkennung von Produkten im internationalen Handel und Reduzierung von Doppelprüfungen.

EPD: Eine standardisierte und transparente Bewertung der Umweltauswirkungen eines Produkts über seinen gesamten Lebenszyklus hinweg zu ermöglichen, um fundierte Entscheidungen hinsichtlich Nachhaltigkeit und Einhaltung gesetzlicher Vorschriften zu ermöglichen.

The guarantee period for the product is 5 years and begins on the day of shipment. Reference is the date of the delivery bill. The guarantee period may differ for accessories.