

CATania 3030 aluminium profile

- high quality aluminium profile
- flexibly useable as surface-mounted or luminaire profile
- with two parallel hollow spaces which can be used as concealed cable channels
- increased light output through integrated reflector
- in combination with the optional reflector stripe the light output can be increased by up to 20 %
- in combination with an opal white cover and compatible LEDlight flex, a homogenous light distribution can be achieved

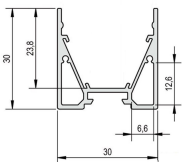


Please refer to the notes on expansion and assembly at the end of the data sheet!

ALUMINIUM PROFILE

	62399811	62399811_9010
Description	aluminium anodized	aluminium powder coated
Colour	natur	white RAL9010
Length	1000 mm	
Width	30 mm	
Height	30 mm	
Material	Aluminium EN AW 6060	
Weight	435 gr	432 gr

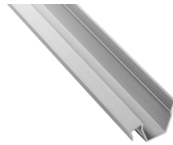
For other lengths please replace the last digit of the 8-digit article number by: 2 = 2.01m / 3 = 3.02m / 5 = 5.03m



INSERT PROFILE

	62398841
Description	CATania insert profile, asymmetrical, for mounting the LEDlight flex family, combinable with GARliano covers, light deflection 14°
Material	Aluminium EN AW 6060
Finish	anodised
Length	1000 mm
Width	27,4 mm
Height	17,91 mm

For other lengths please replace the last digit of the article number by: 2 = 2.01m / 3 = 3.02m / 5 = 5.03m



DIFFUSERS

	62398851	62399821	62399841	62399851	62399861	62399871
Description	anodised aluminium cover	Diffuser opal, for a homogenous and glare-free light distribution	Diffuser high, opal, 180° for an all round homogenous light emission	Diffuser satined, little light consumption and hiding technical view at the same time	Diffuser clear, for maximum light yield and protection of the LED strip	prisma cover to reduce the dazzling effect
Material	aluminium	PMMA				
Version	aluminium	opal white		satined	clear	prisma
Transmission in %	0	77		84	91	
Length	1000 mm					
Width	27,4 mm		30 mm		27,4 mm	
Height	7,9 mm		27,8 mm		7,9 mm	

For other lengths please replace the last digit of the article number by: 2 = 2.01m / 3 = 3.02m / 5 = 5.03m



END CAPS

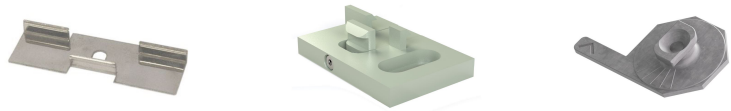
	62399827	62399827_9010	62399828	62399829	62399846
Description	2x CATania end cap, standard, incl. 4 screws	aluminium powder coated	2x CATania end cap with screwless visible surface	2x CATania end cap, cable duct, incl. 4 screws	2 x end caps frosted for plastic cover high 180° item no. 62399846#
Material	aluminium				plastics
Colour	natur	white RAL9010	natur		transparent opalweiß
Length	2 mm				
Width	30 mm				
Height	30 mm				20 mm

Note: The screws for the end caps must be placed and screwed in at a right angle (90°) to the screw channel and may only be screwed in with a max. tightening torque of 0.35 Nm to prevent the screw head from unscrewing or the screw from overtightening (recommended bit PH1).



MOUNTING CLIPS

	62399906	62399908	62399909
Description	holding set, 2x brackets + 2x screws, 306 stainless steel, suitable for GARGano, GARLiano, CATania profile	1x vandal-proof mounting, aluminium, anodised, the alu-profile is fixed to the mounting with a hex key	2 x CATania bracket 2.0, with clamp bracket technology
Material	304 stainless steel	aluminium	zinc die casting
Length	40 mm		39,5 mm
Width	13,5 mm	27 mm	24,5 mm
Height	4 mm	5 mm	6,8 mm
Remarks			Slight color variations of the coating are due to manufacturing processes and do not constitute a quality defect.



ACCESSORIES

	62398801	62399816	62399817
Description	2x angle brackets for a 90° wall installation, aluminium, anodised, incl. 1 rounded head screw	reflectortape with a light reflection of >97%, sold by the metre, suitable for CATania profile	reflectortape with a light reflection of >97%, suitable for CATania profile
Material	aluminium	polymer material	
Finish	anodised	reflecting	
Colour	aluminium	weiß	
Length	30 mm		10000 mm
Width	34 mm	15,5 mm	
Height	30 mm	0,4 mm	
Remarks		Please note that the reflector tape has to be fitted on both sides of the stripe. That means for a 2m luminaire you need 4m reflector tape!	

	62398806	62399919	62399936
Description	profile connector set adjustable, 304 stainless steel, 2 pieces, incl. grub screws, for an angled light line	1x profile connector, incl. locking screws, suitable for GARGano, GARLiano, CATania profile	1x profile 90°-connector, incl. 2 locking screws, suitable for GARGano, GARLiano profile
Material	304 stainless steel	steel	
Finish	nut treated	nickel-plated	galvanized
Colour	silbergrau	silver grey	
Length	104 mm	45 mm	30,4 mm
Width	10,5 mm	10 mm	30,4 mm
Height	7 mm	2 mm	

	65400100	65400150
Description	suspension for ceiling installation (2x 150cm wire cable Ø 1mm with M4 thread, 2x mounting plates, 2x suspension brackets)	suspension for ceiling installation (4x 150cm wire cable Ø 1mm with M4 thread, 4x mounting plates, 4x suspension brackets) for profile lengths > 3m
Material	stainless steel	
Finish	chrome-plated	nut treated
Colour	silber	
Length	1500 mm	



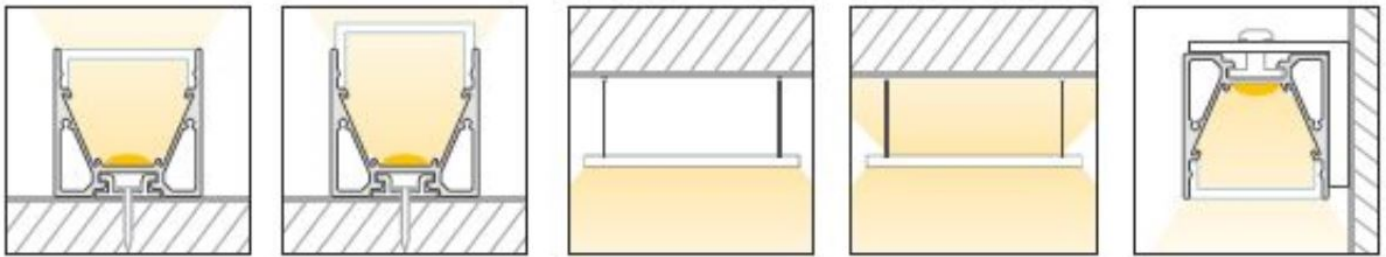
All aluminium profiles and covers are subject to certain length tolerances. This is +20/-0 mm irrespective of the length, i.e. a profile has at least the specified length, but can be up to 20 mm longer.

If you require an exact length, please specify this when ordering (article number 62397000).

Please note that the materials aluminum and PMMA can expand when the temperature changes vary greatly. With a temperature change of 20°C the expansion difference can be up to 1.2 mm per meter! This is no deficiency of the product but a normal physical process.

Installation note: If you directly install two aluminum profiles edge to edge (without end caps), please pay attention during installation, that you don't glue the LED strip directly over the joint, since the profiles at temperature fluctuations - especially at large lengths - will expand/contract (s. section 1) and then the LED tape may be damaged. At joints the LED strip has to be cut at the marked positions and reconnected with flexible solder bridges with corresponding expansion reserve (min. 5mm).

Installation situations



Intended Use

Profile:

- The LED profiles are a component for the reception of LED strips approved for this purpose. In combination with optional accessories such as covers, end caps, inserts, etc., LED luminaires can be produced which are used exclusively for general lighting or accent lighting and therefore do not serve emergency or safety lighting in particular.
- The assembly is carried out via appropriate holders or suspensions, which are offered as accessories. For brackets we recommend 3 brackets per running meter. The profiles are designed for mounting on a stable and straight surface. Depending on the substrate and local conditions, a higher number of brackets may be required and/or the installation material supplied (screws/plugs) must be replaced with suitable mounting material. The brackets must not be bent during assembly, as this has an influence on the holding force. It may not be possible to use the holders provided. Alternatively, the profile can be screwed directly to the substrate. In any case, the installer must ensure that the system is held securely.
- Make sure that the profile expands due to thermal influences. Sufficient space must be kept available for this purpose..
- The mounting instructions for the LED strips and power supplies must be viewed separately.
- The profile is to be used exclusively for the above shown installation situations.

Covers:

- All plastic covers made of PMMA have first-class photometric properties, but are very brittle due to the material, which means that the cover can splinter when subjected to mechanical influences (bending, sawing, other processing). There is a risk of injury, wear safety glasses and gloves! Plastic covers made of PC are not affected.
- PMMA or PC have a higher coefficient of thermal expansion than aluminium. This means that light slits may appear at the joints and terminations of the plastic covers, especially when the unit is not yet at operating temperature..
- To ensure that the cover is held securely, it must be clipped into the holding groove provided for this purpose along its entire length. In any case, the installer must ensure that the system is held securely.
- Alcoholic detergents remove plasticizers from the plastic profiles, which means that they lose their flexibility and can form cracks even when installed. We recommend cleaning only with a damp (clear water), soft cloth.

Accessories (end caps, holders, etc.):

- An LED profile and its accessories are not toys - these components may only be operated by persons who can assess the risks involved in handling them. There is a danger of swallowing small parts.

NOTES

Press marks or slight scratches on profiles are production-related and do not constitute a defect.

Loose, wipeable impurities may appear on the aluminum and plastic profiles. This is due to the production and its handling and does not represent a defect. We generally recommend cleaning the profiles with a soft, lint-free cloth (if necessary with a little clear water) before installation. The LED bonding surface must also be free of grease to ensure good adhesion of the LED strip. Corresponding information can be found in the instructions for the LED strips.

The adhesion of our LEDlight flex strips to the profiles we offer and their different surfaces has been tested and can be ensured if the processing instructions are followed. If there are adhesion problems between LED strips and aluminum profiles, we recommend pre-treatment with the adhesion promoter "3M™ Tape Primer 94".

The guarantee period for the product is 5 years and begins on the day of shipment. Reference is the date of the delivery bill. The guarantee period may differ for accessories.