

CATania 3030 Blackline

Aluminium profile black anodised

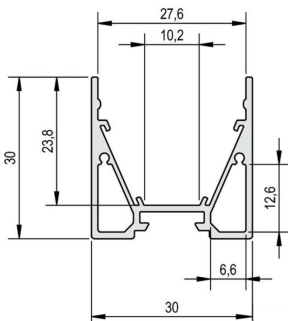
- high-quality luminaire profile made of aluminium, black anodised
- also available with black cover for design-relevant projects
- can be used flexibly as a surface-mounted or luminaire profile
- with two parallel hollow spaces which can be used as concealed cable channels
- combined with the optional reflector stripe the light output can be increased by up to 20 %
- in combination with opal black or opal white diffuser and compatible LEDlight flex (up to pitch 16*), a homogenous light distribution can be achieved



Please refer to the notes on expansion and assembly at the end of the data sheet!

ALUMINIUM PROFILE

	62398761	62398762	62398763	62398765
Length	1000 mm	2010 mm	3020 mm	5030 mm
Width	30 mm			
Height	30 mm			
Colour	schwarz			
Material	Aluminium, schwarz eloxiert			
Finish	anodised			
Weight	459 gr	918 gr	1377 gr	2295 gr



DIFFUSERS

	62398851	62399691	62399821	62399841	62399851	62399861	62399871
Description	anodised aluminium cover	cover opal black, PMMA, for a homogenous and glare-free light distribution	Diffuser opal, for a homogenous and glare-free light distribution	Diffuser high, opal, 180° for an all round homogenous light emission	Diffuser satined, little light consumption and hiding technical view at the same time	Diffuser clear, for maximum light yield and protection of the LED strip	prisma cover to reduce the dazzling effect
Material	aluminium	PMMA					
Version	aluminium	opal black	opal white		satined	clear	prisma
Transmission in %	0	22	77		84	91	
Length	1000 mm						
Width	27,4 mm		30 mm		27,4 mm		
Height	7,9 mm		27,8 mm		7,9 mm		

For other lengths please replace the last digit of the article number by: 2 = 2.01m / 3 = 3.02m / 5 = 5.03m



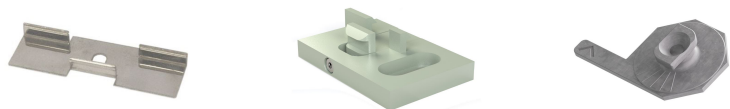
END CAPS

	62398767
Description	CATania 3030 end caps, screwless visible surface, aluminium, black anodised, 2 pcs, incl. 2 grub screws
Material	aluminium
Colour	schwarz
Length	2 mm
Width	30 mm
Height	30 mm



MOUNTING CLIPS

	62399906	62399908	62399909
Description	holding set, 2x brackets + 2x screws, 306 stainless steel, suitable for GARgano, GARliano, CATania profile	1x vandal-proof mounting, aluminium, anodised, the alu-profile is fixed to the mounting with a hex key	2 x CATania bracket 2.0, with clamp bracket technology
Material	304 stainless steel	aluminium	zinc die casting
Length	40 mm		
Width	13,5 mm	27 mm	39,5 mm
Height	4 mm	5 mm	24,5 mm
Remarks	Slight color variations of the coating are due to manufacturing processes and do not constitute a quality defect.		



ACCESSORIES

	62398801	62399816	62399817
Description	2x angle brackets for a 90° wall installation, aluminium, anodised, incl. 1 rounded head screw	reflectortape with a light reflection of >97%, sold by the metre, suitable for CATania profile	reflectortape with a light reflection of >97%, suitable for CATania profile
Material	aluminium	polymer material	
Finish	anodised	reflecting	
Colour	aluminium	weiß	
Length	30 mm		10000 mm
Width	34 mm	15,5 mm	
Height	30 mm	0,4 mm	
Remarks		Please note that the reflector tape has to be fitted on both sides of the stripe. That means for a 2m luminaire you need 4m reflector tape!	

	62398806	62399919	62399936
Description	profile connector set adjustable, 304 stainless steel, 2 pieces, incl. grub screws, for an angled light line	1x profile connector, incl. locking screws, suitable for GARGano, GARliano, CATania profile	1x profile 90°-connector, incl. 2 locking screws, suitable for GARGano, GARliano profile
Material	304 stainless steel	steel	
Finish	nut treated	nickel-plated	galvanized
Colour	silbergrau	silver grey	
Length	104 mm	45 mm	30,4 mm
Width	10,5 mm	10 mm	30,4 mm
Height	7 mm	2 mm	



	65400100	65400150
Description	suspension for ceiling installation (2x 150cm wire cable Ø 1mm with M4 thread, 2x mounting plates, 2x suspension brackets)	suspension for ceiling installation (4x 150cm wire cable Ø 1mm with M4 thread, 4x mounting plates, 4x suspension brackets) for profile lengths > 3m
Material	stainless steel	
Finish	chrome-plated	nut treated
Colour	silber	
Length	1500 mm	



All aluminium profiles and covers are subject to certain length tolerances. This is +20/-0 mm irrespective of the length, i.e. a profile has at least the specified length, but can be up to 20 mm longer.

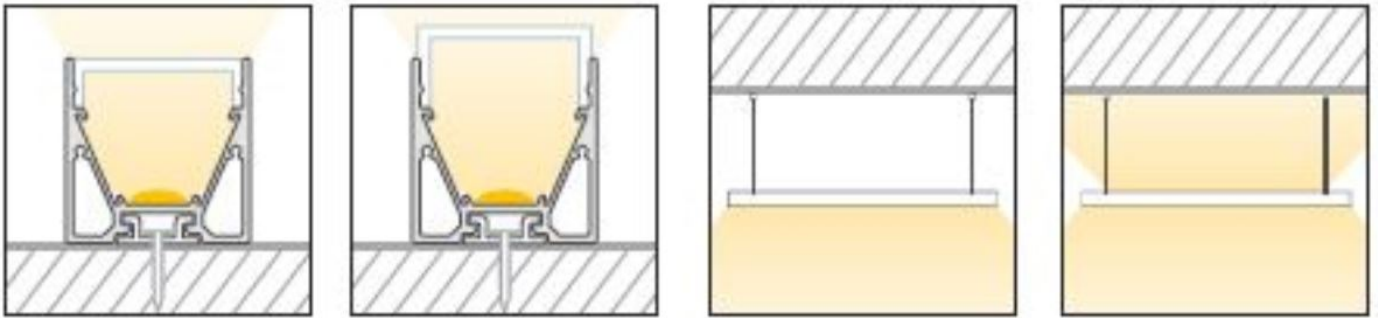
If you require an exact length, please specify this when ordering (article number 62397000).

Please note that the materials aluminum and PMMA can expand when the temperature changes vary greatly. With a temperature change of 20°C the expansion difference can be up to 1.2 mm per meter! This is no deficiency of the product but a normal physical process.

Installation note: If you directly install two aluminum profiles edge to edge (without end caps), please pay attention during installation, that you don't glue the LED strip directly over the joint, since the profiles at temperature fluctuations - especially at large lengths - will expand/contract (s. section 1) and then the LED tape may be damaged. At joints the LED strip has to be cut at the marked positions and reconnected with flexible solder bridges with corresponding expansion reserve (min. 5mm).

Please note that damage to the surface (e.g. scratches) removes superficial anodising and the silver raw material becomes visible. Handling and assembly must be handled with due care.

Installation situations



Intended Use

Profile:

- The LED profiles are a component for the reception of LED strips approved for this purpose. In combination with optional accessories such as covers, end caps, inserts, etc., LED luminaires can be produced which are used exclusively for general lighting or accent lighting and therefore do not serve emergency or safety lighting in particular.
- The assembly is carried out via appropriate holders or suspensions, which are offered as accessories. For brackets we recommend 3 brackets per running meter. The profiles are designed for mounting on a stable and straight surface. Depending on the substrate and local conditions, a higher number of brackets may be required and/or the installation material supplied (screws/plugs) must be replaced with suitable mounting material. The brackets must not be bent during assembly, as this has an influence on the holding force. It may not be possible to use the holders provided. Alternatively, the profile can be screwed directly to the substrate. In any case, the installer must ensure that the system is held securely.
- Make sure that the profile expands due to thermal influences. Sufficient space must be kept available for this purpose..
- The mounting instructions for the LED strips and power supplies must be viewed separately.
- The profile is to be used exclusively for the above shown installation situations.

Covers:

- All plastic covers made of PMMA have first-class photometric properties, but are very brittle due to the material, which means that the cover can splinter when subjected to mechanical influences (bending, sawing, other processing). There is a risk of injury, wear safety glasses and gloves! Plastic covers made of PC are not affected.
- PMMA or PC have a higher coefficient of thermal expansion than aluminium. This means that light slits may appear at the joints and terminations of the plastic covers, especially when the unit is not yet at operating temperature..
- To ensure that the cover is held securely, it must be clipped into the holding groove provided for this purpose along its entire length. In any case, the installer must ensure that the system is held securely.
- Alcoholic detergents remove plasticizers from the plastic profiles, which means that they lose their flexibility and can form cracks even when installed. We recommend cleaning only with a damp (clear water), soft cloth.

Accessories (end caps, holders, etc.):

- An LED profile and its accessories are not toys - these components may only be operated by persons who can assess the risks involved in handling them. There is a danger of swallowing small parts.

NOTES

Press marks or slight scratches on profiles are production-related and do not constitute a defect.

Loose, wipeable impurities may appear on the aluminum and plastic profiles. This is due to the production and its handling and does not represent a defect. We generally recommend cleaning the profiles with a soft, lint-free cloth (if necessary with a little clear water) before installation. The LED bonding surface must also be free of grease to ensure good adhesion of the LED strip. Corresponding information can be found in the instructions for the LED strips.

The adhesion of our LEDlight flex strips to the profiles we offer and their different surfaces has been tested and can be ensured if the processing instructions are followed. If there are adhesion problems between LED strips and aluminum profiles, we recommend pre-treatment with the adhesion promoter "3M™ Tape Primer 94".

The guarantee period for the product is 5 years and begins on the day of shipment. Reference is the date of the delivery bill. The guarantee period may differ for accessories.